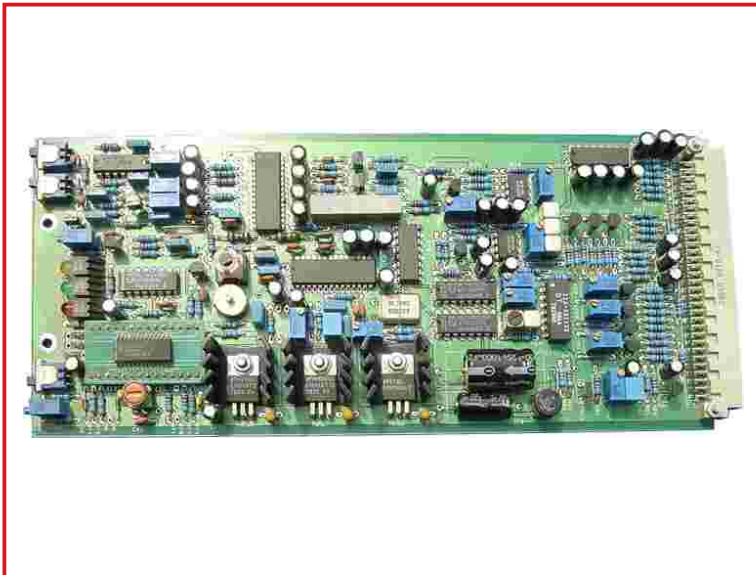


TTR 140 Computer Graphics Video Encoder/Decoder unit

TTR

Computer Graphics Video Encoder/Decoder



The TTR140 is an economically priced coder/decoder designed for computer graphics applications. The unit will decode composite colour signals or YC (i.e. S-VHS or Hi-8) signals to RGBS, for frame grabbing - selection between the composite or YC input is made with a switch on the TTR140 module. The unit also accepts RGBS signals back from the graphics system and encodes them to composite or YC. With the exception of the reference sync input, the coder and decoder are completely independent of each other, allowing the unit to be used in other applications. The coder takes its reference from the decoder composite input or the YC input (selected by the switch on the module), but if a sync signal is fed to the Sync input the coder will line lock to this input, though it will still colour lock to the decoder input. The internal sync pulse generator ensures that an output Mixed Sync signal is always available from the decoder, even in the absence of an input.

If it is required to time the coder output to another source, an H fine phase control and coarse and fine Subcarrier phasing controls are provided on the front of the TTR140 coder module. The coder includes an optional facility which allows an additional set of RGB inputs to be keyed over the "prime" inputs. This facility can also be used to simply switch between two sets of RGB inputs. The TTR140 is available as a Eurocard, housed in a 19" 1U rack unit which can accommodate up to two modules. The on-board power supply includes rectifiers and regulators allowing the power input to be either ac or dc.

Features

- Decodes composite or YC signals to RGBS
- Encodes RGBS to composite or YC
- Optional facility to select between RGB inputs to coder
- Can be used for in-vision monitor colour correction

Specifications

CONNECTIONS	Decoder <ul style="list-style-type: none">● Composite Input - 1x BNC connector.● Y Input - 1x BNC connector.● C Input - 1x BNC connector.● RGB - 3x BNC connectors.● Sync - 1x BNC connector. Coder <ul style="list-style-type: none">● RGB Input One - 3x BNC connectors.● RGB Input Two - 3x BNC connectors.● Key Input (keys Input Two over Input One) - 1x BNC connector.● Composite Outputs - 2x BNC connectors.● Y Outputs - 2x BNC connectors.● C Outputs - 2x BNC connectors.● Sync Input - 1x BNC connector
USER CONTROLS	Input Mode Select ● Switch Composite or YC(S-VHS) System Phasing ● Subcarrier phasing: (Switch 0-180 , Switch 0-90 , Continuous 95) Horizontal Phasing ● Fine phase adjustable
POWER	Voltage 198-250 Vac or 90-125 Vac Consumption 16 VA nominal Mains connector IEC type
CASE	Width 19" rack mounting Height 1U (44mm) Depth 410mm including rear connectors Weight 5Kg (packed)
CONNECTOR TYPES	Video BNC Power (mating supplied) IEC

TTR

TTR Ltd
84 Bridge Road,
Chertsey, Surrey
KT16 8LA. England.
Telephone: +44 (0) 1932 564063
Fax: +44 (0) 1932 885182
E-mail: Sales@ttr.co.uk